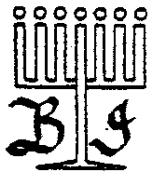


CongregationBethIsraelNassau.Org

C O N G R E G A T I O N

Beth Israel

141 HILTON AVENUE, HEMPSTEAD, NEW YORK 11550



FEBRUARY 2018

Purim



fmg

COME CELEBRATE

PURIM

WITH US

B'NEINU (BETWEEN US)

There was a time – and not that long ago – when being a Jew meant you ate with other Jews; you studied with other Jews; married other Jews; lived amongst other Jews. For much of history that was just how things were. Non-Jewish rulers and non-Jewish neighbors would not allow it any other way.

The Jew as an individual was looked upon favorably or not depending upon what the image of the Jew as a community was.

As we have become integrated we have, as a group, also become assimilated. Traditional beliefs and practices no longer lie at the center of many Jewish lives.

I see and hear Jewish parents talk about the lack of interest in “formal” Judaism by their children. As the children become adults many do not belong to a synagogue and many inter-marry. And more often than not, the children of those marriages are no longer Jews-by-practice. Or belief.

Did the parents encourage any Jewish education beyond the Bar/Bat Mitzvah or was the party the last Jewish experience for the young adult?

Did the family light candles on Friday night? Was there any acknowledgement of Shabbat? Of its meaning and importance? Why have a kosher affair if no-one keeps kosher at home? Why not have the doctor perform a circumcision in the hospital instead of having a *bris*?



Last year a Conservative synagogue here on Long Island sent out an email to their congregation on a Shabbat. Whether or not the email was time-sensitive (which it was not), the question is the appropriateness of a Jewish organization transgressing the laws of Shabbat.

A similar question came up in a recent board meeting when it was asked what is meant by “Conservative Judaism”.

No matter what *brand* of Judaism a congregation alludes to, it is doubtful that *every* member will adhere to all of the tenets of belief that a Conservative, Reform or Reconstructionist congregation follows. Even within Conservative (aka Masorti) there are egalitarian as well as traditional followers.

Our representation to ourselves and to those outside our congregation is that we are a Conservative Egalitarian synagogue. Whether officially a part of a movement or not.

As such, our portrayal as Jews demands that our congregation as a whole adhere to conservative egalitarian standards even though not all of us actually do. Not every congregant keeps kosher yet we allow only kosher foods to be brought into the building. Not every female congregant will take an aliyah and there may be someone not comfortable with a female davening or getting an aliyah. Yet CBI does recognize those standards. Not every congregant keeps Shabbat, yet we are open only for services, not for business.

We as a congregation – as a community – must hold ourselves as a whole, to a higher standard.



Along with the Ritual Committee, we have been looking into ways to open up our services to more of you. In order for everyone to have a feel for what we do, you are always welcome to attend any of our meetings.

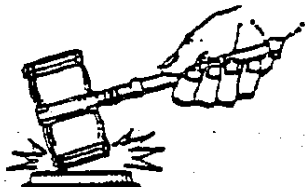


Adult Education: Please join me on Sunday morning, February 25 at 11am for a class on Conservative Judaism: what it means to be a Conservative Jew today.



— Rabbi Eisenstein

516.547.3581 • RABBI.MICHAEL@ME.COM



From the President

On Sunday, April 15th, 2018, CBI will be offering a very special program to commemorate the shoah, an unprecedented undertaking by the leader of a supposedly civilized nation to obliterate millions of its law abiding and mostly highly educated and productive citizens.

Although it took years for some of the most heavily armed nations of the world to take down Hitler and his super armies, haven't you been asked by non Jews, "Why didn't they fight back?" "Why did they go like lambs to the slaughter?" Jews in our own army and navy in WWII were frequently jeered at—"Jews don't fight—they just sew the uniforms." Or they would sneer, "Couldn't you pull the right strings?" when they saw a new recruit.

Yes, today, we have the example of Israel facing down the combined armies of the Arab world, and the heroism at Entebbe electrified the world. But this is today, not back then.

Let us not forget that for weeks the unarmed men, women and children of the Warsaw ghetto fought the might of the thousand year Reich and upset the German timetable.

In Lithuania, the storied intellectual center of Eastern European Jewry, the Nazis came in with a plan to destroy the entire Jewish population and Judaism itself. They planned a museum in Berlin to display the intellectual output of generations of Eastern European Jews so that people could visit as we visit the Museum of Natural History to look at the extinct dinosaurs. They were, after all, planning the extinction of Jews and Judaism.

We invite you and everyone you know to come to Beth Israel on April 15th and hear from Professor David Fishman how a group of little people, nobodies of the world, did not save themselves, but saved the soul of the Jewish people. Let us be together, stand pridefully tall, and glory in the victory they achieved as we observe this special day of remembrance.

Congregation Beth Israel of Hempstead

Yom Hashoah Service

GUEST SPEAKER: DR. DAVID E. FISHMAN

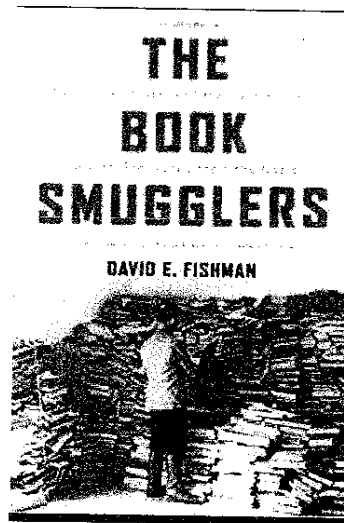
Professor of Jewish History

Director, Project Judaica

The Jewish Theological Seminary

Author: Russia's First Modern Jews, The Jews of Shlov, The Rise of Modern Yiddish Culture and now

The Book Smugglers of the Vilna Ghetto.



Historian David Fishman recounts one of the most amazing chapters of spiritual resistance in the Holocaust. A group of ghetto inmates risked their lives day in and day out for more than a year to rescue thousands of rare Jewish books, manuscripts, and documents from looting and destruction by the Nazis. After World War II, the survivors dug up the cultural treasures hidden in bunkers and the places and smuggled many of them to America and the Land of Israel. Fishman has documented this remarkable event based on Jewish, German and Soviet sources in his new book, ***The Book Smugglers, Partisans, Poets and the Race to save Jewish treasures from the Nazis.***

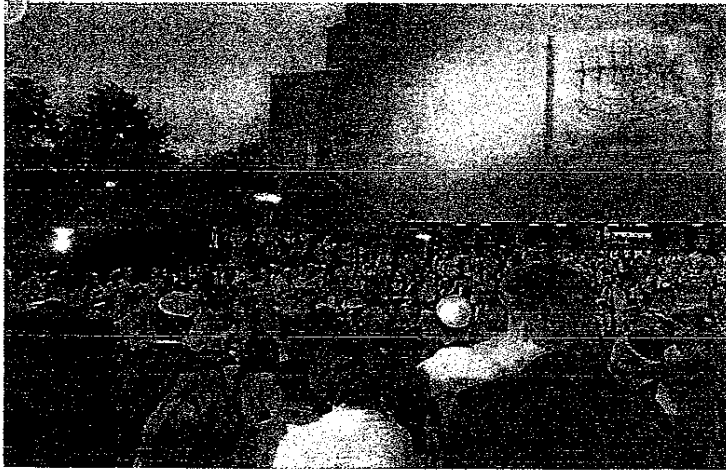
SUNDAY, APRIL 15, 2018 at 2PM

For more information, please contact Susan at (516) 662-6800

WHAT DO YOU THINK? IS THIS FOR YOU? WRITE OR CALL PAUL SKULSKY, RITUAL CHAIRPERSON WITH YOUR IDEAS ON HOW TO MAKE OUR SERVICES MEANINGFUL TO YOU.

Conservative shuls turning to musical instruments to boost Shabbat services

By Uriel Heilman | April 8, 2015 3:18pm



Adas Israel, Washington's largest Conservative synagogue, launched a popular outdoor instrumental Kol Nidre service. (David Polonsky)

NEW YORK (JTA) – When Rabbi Bruce Dollin first talked to the board at his Conservative synagogue about launching an alternative, singing-centered Shabbat morning service that would use musical instruments, he didn't encounter much resistance.

Over the two decades he had led the Hebrew Educational Alliance in Denver, attendance at the synagogue's regular Shabbat davening – a traditional egalitarian service – had declined by almost half and most of the 200

weekly worshippers were over age 50. Dollin had just returned from a sabbatical and wanted to test some fresh ideas.

Called Shir Hadash, Hebrew for "new song," the new service cut out certain prayers, was held in the round, encouraged participatory singing and featured drums.

"I would have used a guitar in the service, except the guitar didn't work well with the kind of service we were trying to create," Dollin said. "Guitar is a loud instrument that draws a lot of attention to the guitar player, and we wanted our emphasis to be the congregation itself."

The new minyan was an instant hit. Within months, dozens of regulars from the traditional service had switched over, and at least 70 people new to the synagogue had become Shir Hadash mainstays.

"I wasn't a good synagogue-going Jew for many years," Denver native J.J. Slatkin, 32, told JTA. "Then I started going to Shir Hadash. There's something about the music that allows me to turn off the rationalism in my brain and just connect to my spirituality in a way that I can't do otherwise."



We're writing this article as we look across the snowy landscape of Hempstead & Floral Park. We want to thank all those who attended the Israeli Dance Party; it was such a tremendous success.

No general meeting this month, but there's still Purim to think about with all its accoutrement. So we gave a head's up about help we need for Purim activities: shopping, basket making, organizing the party, participating in the Purim Schpiel. Whatever anyone can do would be greatly appreciated. **Please contact: Judi or Laura.**

The book review scheduled for January is postponed for February 11 due to more participation needed. The name of the book is Before We Were Yours by Lisa Wingate, led by Susan Bass. It is a hot book, so get your copy at your local library, or borrow, or order from Amazon (hard copy or kindle), \$14.98, prime.

We have a Congregational Board Meeting on March 4th at 11:30 AM. Afterwards, please join us for a bagel and smear lunch at our Purim Schpiel as we light-heartedly jest and joust, compliments of Sisterhood, of course. **So PURIM SCHPIEL is March 4th at 1:30 PM**

Looking ahead, we will have another great **Fashion Show on April 8th**. This time, by popular demand, men will also be strutting their stuff. In order to prepare there are many positions to be filled: **chairperson needed.**

Sisterhood Shabbat comes early this year, **May 25th**. Please sign up. In the meantime, keep warm and safe. **See you at services on Saturday.** We leave you with this thought by Powys Mathers, translated from the Turkish.

Before you love,
Learn to run through snow
Leaving no footprint.

Your Devoted Sisterhood Co-Presidents,
Laura & Judi

The Jewish Wedding Chapel at Congregation Beth Israel



We invite you to rededicate
your vows, get married or have
a Jewish wedding ceremony...

Wedding Includes:

- Use of Sanctuary (can accommodate 2 - 200 guests)
- Officiation by a Rabbi
- Flowers and Decorations
- Coffee and Cake for Guests
- Ketubah or Rededication Certificate
- One-Year membership in Congregation Beth Israel,
Holiday Seats Included



Call Lynn 516-641-2203

for more information email at: LSS500@aol.com

DATES AVAILABLE NOW

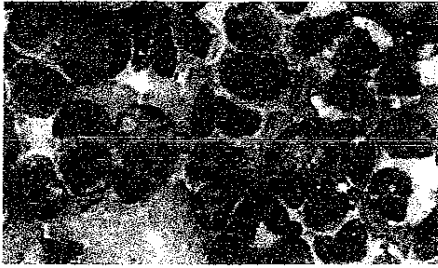
141 Hilton Avenue | 516-489-1818

(on the Garden City-Hempstead Border)

www.bethisraelnassau.org

SPEC

HOW WEIZMANN IS TRANSFORMING THE WORLD: RESEARCH HIGHLIGHTS FROM THE LAST YEAR

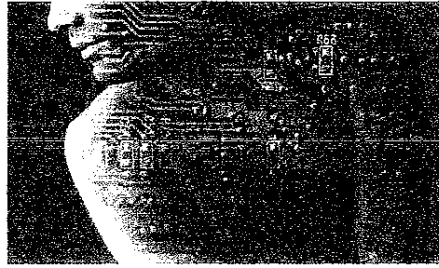


FIGHTING CANCER

IDENTIFYING AND TREATING “PRE-LEUKEMIC” STEM CELLS

Dr. Liran Shlush and his team tracked acute myeloid leukemia (AML) in leukemia patients from early development to diagnosis, and through progression to relapse.

During this time, they identified therapy-resistant cells—derived from specific stem cell progenitors. Identifying these distinct patterns of relapse should lead to improved methods for disease management and have considerable implications for cancer biology in general.



ADVANCING TECHNOLOGY

THE EVOLVING MAN-MACHINE PARTNERSHIP

Since the dawn of the computer age, programmers have told machines exactly what to do—but Prof. David Harel and his team are turning this idea on its head!

They are launching what they call “Wise Computing,” in which the computer joins the development and decision-making team as an equal partner. The machine actually understands the specific, real-world domain in which it will be used—and has “experience” to draw on so it can actively contribute to the design process.



RAISING THE BAR BY “TEACHING THE TEACHERS”

With today’s rapid pace of scientific discovery, school textbooks just aren’t enough to keep teachers and students up-to-date. That’s why we created the Rothschild-Weizmann Program for Excellence in Science Teaching.

The program exposes teachers to cutting-edge research in their respective disciplines inside Weizmann labs, contemporary topics in general science, and innovations in science education.

Almost ten years into the program, we have already raised the bar for science education across Israel!

PROTECTING THE PLANET

TREES AND THE FUTURE OF CLIMATE CHANGE

Prof. Tamir Klein lives and breathes trees—discovering new insights into how trees cycle water and nutrients between leaves, stems, and roots. He has even shown evidence of “carbon trade,” in which trees share carbon and other nutrients to keep each other healthy.

He says, “Studying trees matters since they form the largest biological carbon pool on Earth.” Through his research, he’s helping to ensure that as the earth continues to heat up, we are prepared.

IMPROVING HEALTH AND MEDICINE

SCIENTISTS REGENERATE HEART TISSUE WITH KEY PROTEIN

Most scientists agree that once damage has been done to heart tissue, it’s irreversible. Until now. A new study by Prof. Eldad Tzahor has uncovered a molecule called Agrin in the hearts of newborns that appears to control the repair and regeneration process after injury.

When Agrin was introduced into the injured hearts of mice, the hearts almost completely healed and became fully functional after about a month. The scar tissue was also dramatically reduced and replaced by living heart tissue.

EXPLORING THE PHYSICAL WORLD

AN ATOMIC CLOCK IS HEADED TO THE LARGEST PLANET

Weizmann will eventually have a direct line to Jupiter, if all goes according to plan! Prof. Yohai Kaspi is part of a mission to investigate the properties of the Solar System’s largest planet and several of its moons—where they believe life may exist.

This incredible experiment involves an atomic clock so accurate it would lose less than a second in 100,000 years, as well as a radio beam that, when focused on the planet, will penetrate the upper layers of Jupiter’s atmosphere.

